

# NATIONAL INFORMATION CAMPAIGN JOIN HORIZON EUROPE



Pillar 1: Excellent Science

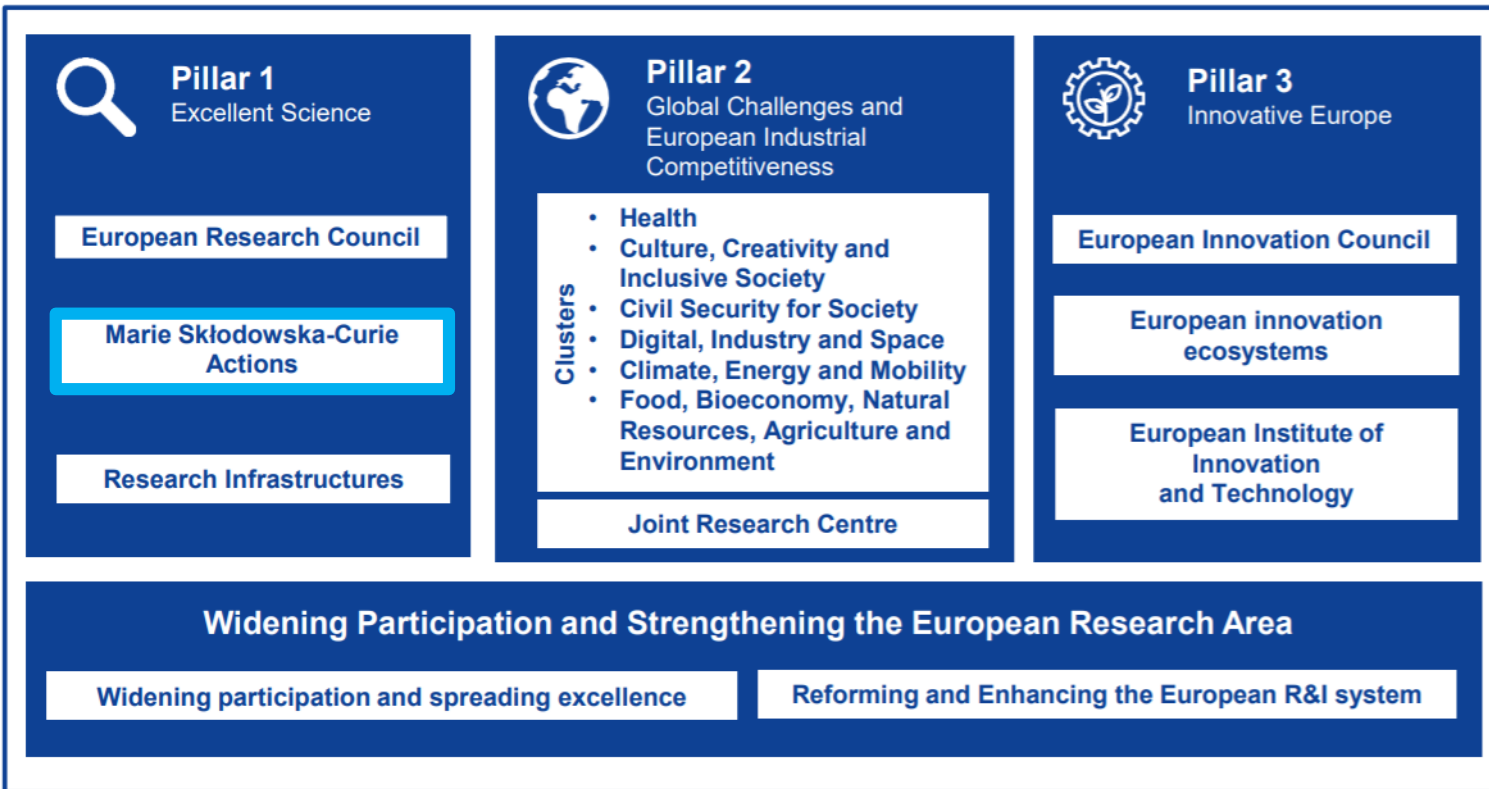
8 March 2021

# Marie Skłodowska-Curie Actions

Zuzana Čapková ([capkova@tc.cz](mailto:capkova@tc.cz)),  
National contact point for Marie Skłodowska-Curie Actions



# Marie Skłodowska-Curie Actions



# MSCA key features

- **Training and career development** of researchers from **all over the world** through excellent doctorates, postdoctoral fellowships and collaborative projects
- **Mobility** (researchers who receive funding have to move from one country to another to acquire new knowledge, skills and competences, and develop their research career)
- **International, inter-sectoral and interdisciplinary** cooperation (participation of **non-academic sector**, especially industry and SMEs)
- For researchers at **every stage** of their career, **supervision** (Guidelines for MSCA supervision)
- Excellent research in all domains (**bottom-up approach**)
- **Attractive working and employment** conditions (financing rate of up to 100%) **and inclusiveness** ([Charter and Code](#))
- **Open Science and Responsible Research and Innovation (RRI)**
- **Sustainable research in line with the European Green Deal** (MSCA Green Charter)
- **Synergies** with ERDF and ESF+ via **Seal of Excellence**

# MSCA in Horizon Europe (2021-2027)

<u>Horizon 2020</u>	<u>Horizon Europe</u>	<u>Who?</u>
<b>Innovative Training Networks (ITN)</b>	<b>Doctoral Networks (DN)</b>	doctoral candidates
<b>Individual Fellowships (IF)</b>	<b>Postdoctoral Fellowships (PF)</b>	postdoctoral researchers
<b>Research and Innovation Staff Exchanges (RISE)</b>	<b>Staff Exchanges (SE)</b>	any type of research-related staff
<b>Co-funding of regional, national and international programmes (COFUND)</b>	<b>MSCA COFUND (COFUND)</b>	doctoral candidates, postdoctoral researchers
<b>European Researchers' Night (NIGHT)</b>	<b>MSCA and Citizens (CITIZENS)</b>	public

# Terminology I

- **Participating countries**
  - **EU Member States (MS)**
  - **Associated Countries (AC)** = third country which is party to an international agreement with the EU
  - **Third Countries (TC)** = not associated to Horizon Europe, the rest of the world
- **Beneficiaries** = legal entities that sign the grant agreement and have the responsibility for the proper implementation of the action. They contribute directly to the implementation of the research, transfer of knowledge and training activities.
- **Associated partners** = entities which participate in the action, but without the right to charge costs or claim contributions. They contribute to the implementation of the action, but do not sign the grant agreement.
- **Implementing partners** = third parties receiving financial support from the beneficiary and implementing the MSCA COFUND Doctoral or Postdoctoral programmes.

# Terminology II

- **2 categories of researchers according to scientific age**
  - **Doctoral Candidates** = not already in possession of a doctoral degree at the date of the recruitment.
  - **Postdoctoral Researchers** = at the date of the call deadline in a possession of a doctoral degree, defined as a successfully defended doctoral thesis, even if the doctoral degree has yet to be awarded.
- **Person-month** = 1 person working for 1 month full-time equivalent (FTE).
- **Interdisciplinarity** = integration of information, data, techniques, tools, perspectives, concepts or theories from two or more scientific disciplines.

# Terminology III

- **Academic sector** = public or private higher education establishments awarding academic degrees, public or private non-profit research organisations for whom one of the main objectives is to pursue research or technological development, and International European Research Organisations (IERO).
- **Non-academic sector** = any socio-economic actor not included in the academic sector and fulfilling the requirements of the Horizon Europe Rules for Participation. This includes all fields of future workplaces of researchers, from industry to business, independent research infrastructures (e.g. ERICs), government, civil society organisations, cultural institutions, hospitals, etc.
- **Mobility rule** = researchers must not have resided or carried out their main activity (work, studies, etc.) in the country of the host/recruiting institution for more than 12 months in the last 36 months towards the reference date (i.e. before the call deadline/their recruitment date).



## 2021 and 2022 Calls\*

Call	Type of Action	Opening date	Deadline
MSCA-PF-2021 MSCA-PF-2022	Postdoctoral Fellowships	18/05/2021 13/04/2022	15/09/2021 14/09/2022
MSCA-DN-2021 MSCA-DN-2022	Doctoral Networks	18/05/2021 03/05/2022	16/11/2021 15/11/2022
MSCA-CITIZENS-2021 (No call foreseen in 2022)	MSCA and Citizens	17/06/2021	7/10/2021
MSCA-SE-2021 MSCA-SE-2022	Staff Exchanges	07/10/2021 6/10/2022	9/03/2022 8/03/2023
MSCA-COFUND-2021 MSCA-COFUND-2021	COFUND	12/10/2021 11/10/2022	10/02/2022 9/02/2023

Dates to be confirmed with the adoption of the Work Programme

# MSCA Doctoral Networks



# MSCA Doctoral Networks

- **Objectives**
  - **MSCA Doctoral Networks** aim to train creative, entrepreneurial, innovative and resilient **doctoral candidates**, able to face current and future challenges and to convert knowledge and ideas into products and services for economic and social benefit.
  - The MSCA Doctoral Networks will raise the **attractiveness and excellence of doctoral training in Europe**.
  - They will equip researchers with the right combination of **research-related and transferable competences** and provide them with **enhanced career perspectives** in both the academic and non-academic sectors through international, interdisciplinary and inter-sectoral mobility.

# MSCA Doctoral Networks

- Focus on **Career Development Plan** (at the beginning of recruitment and revised and updated when needed within 18 months), **supervision, training: research and transferable skills** (EU Principles for Innovative Doctoral Training)
- **Target group**
  - doctoral candidates, i.e. researchers without a doctoral degree at the date of the recruitment
- **One action** to set up **doctoral programmes**, including
  - **Industrial Doctorates:** training in academia and industry, joint supervision
  - **Joint Doctorates:** joint collaborations leading to a joint/multiple doctoral degree, joint selection and supervision

# MSCA Doctoral Networks

- **Who applies?**
  - **partnerships** of universities, research institutions and research infrastructures, businesses including SMEs, and other socio-economic actors
  - at least **three independent legal entities**, each established in a different MS or AC; minimum of 1 beneficiary from a MS (on top of this minimum, any entity from any third country can join)
  - Multi-beneficiary action
- **Novelties for applicants (consortia)**
  -  – **Reduced number of fellow-months in project** (360 person-months for MSCA Doctoral Networks, 540 person-months for Industrial or Joint Doctoral programmes)
  -  – **Restricted resubmissions below quality threshold** (if less than 80 % under Horizon Europe, must not be resubmitted the following year)

# MSCA Doctoral Networks

- **Size**
  - Up to 360 person-months (standard) + 180 additional person-months for joint or industrial doctorates (incentive)
- **Duration**
  - Programmes: max. 48 months
  - Fellowships: between 3 and 36 months
  - Secondments: up to 1/3 of the fellowship duration
  - Industrial doctorates: 50% in the non-academic sector, can be in the same country as the academic host
- **Calls**
  - 2021: 4 May – 16 Nov 2021
  - 2022: 3 May – 15 Nov 2022
  - Resubmission restrictions applying as of 2022 for applications receiving a score below 80%



- EU contribution takes the form of unit contributions, depends on the number of person-months requested, 100% financing

Contributions for the recruited researcher per person-month					Institutional unit contributions per person-month	
Living allowance	Mobility allowance	Family allowance	Long-term leave allowance	Special needs allowance	Research, training and networking contributions	Management and indirect contributions
EUR 3 400*	EUR 600	EUR 660	EUR 4 000 x % covered by the beneficiary	requested unit x (1/number of months)**	EUR 1 600	EUR 1 200

\* CCC: country correction coefficient applies.

\*\* The pre-defined categories are as follows: EUR 3 000, EUR 4 500, EUR 6 000, EUR 9 500, EUR 13 000, EUR 18 500, EUR 27 500, EUR 35 500, EUR 47 500 and EUR 60 000.

# MSCA Postdoctoral Fellowships



# MSCA Postdoctoral Fellowships

- **Objectives**

- The goal of MSCA Postdoctoral Fellowships is to enhance the creative and innovative potential of researchers holding a PhD, wishing to **acquire new skills through advanced training, international, interdisciplinary and inter-sectoral mobility.**
- MSCA Postdoctoral Fellowships are **open to excellent researchers of any nationality**, including researchers wishing to reintegrate in Europe, researchers who are displaced by conflict as well as researchers with high potential aiming for a career restart in research.
- The scheme also **encourages researchers to work** on research and innovation projects **in the non-academic sector.**

# MSCA Postdoctoral Fellowships

- Continue supporting postdoctoral research and careers; open to researchers of any nationality
- **Focus on the scientifically younger generation** than in Horizon 2020
- New mind-sets and approaches to research and innovation through **interdisciplinary, inter-sectoral and international experience**
- **Continue funding all research domains** (bottom-up approach)

New

- newly including areas of research covered by the Euratom Programme 2021-2025: organisations active in nuclear research established in one of Euratom MS/AC are eligible, annual budget of EUR 1 mil.

- **One single action** (mono-beneficiary)
  - Two destinations: **European and Global Postdoctoral Fellowships**
  - Secondments in any country (1/3 of EF, 1/3 of GF outgoing phase)

New

- Incentive for additional period of up to 6 months for **placements in the non-academic sector in EU/AC**

# MSCA Postdoctoral Fellowships

- **Develop skills needed for academia and beyond**

- Intensified exposure/secondments to training in entities beyond academia

**New** – Improved guidance towards career development (Career Development Plan as deliverable at the beginning of the project)

- **In order to manage the increasing demand (to maintain high-quality selection) and improve success rate**

**New** – **Research experience limited to 8 years postdoc** (with possible exceptions – years of experience outside research, career breaks or research in third countries are not considered in this maximum)

**New** – **PhD degree required** (at the date of the call deadline in a possession of a doctoral degree = successfully defended doctoral thesis)

**New** – **Restricted resubmissions below quality threshold** (will be applied firstly in 2022, less than 70 % in the previous Call of MSCA PF under Horizon Europe, the applicant must not resubmit the following year)

# MSCA Postdoctoral Fellowships

- **Duration** (no change)
  - **European Fellowships** (researchers of any nationality): 12-24 months (additional up to 6 months for non-academic sector)
  - **Global Fellowships** (European nationals or long-term residents = continuous residence in MS/EU of at least 5 consecutive years): 24-36 months (12-24 months outgoing phase + 12 months mandatory return phase in Europe)
- **Calls**
  - 2021: 15 Apr – 15 Sept 2021
  - 2022: 14 Apr – 14 Sept 2022

- EU contribution takes the form of unit contributions, depends on the number of person-months requested, 100% financing

Contributions for the recruited researcher					Institutional unit contributions	
per person-month					per person-month	
Living allowance	Mobility allowance	Family allowance	Long-term leave allowance	Special needs allowance	Research, training and networking contributions	Management and indirect contributions
EUR 5 080*	EUR 600	EUR 660	EUR 5 680 x % covered by the beneficiary	requested unit x (1/number of months)**	EUR 1 000	EUR 650

\* CCC: country correction coefficient applies.

\*\* The pre-defined categories are as follows: EUR 3 000, EUR 4 500, EUR 6 000, EUR 9 500, EUR 13 000, EUR 18 500, EUR 27 500, EUR 35 500, EUR 47 500 and EUR 60 000.

# Alternative funding

- **International Mobility of Researchers („MSCA Postdoctoral Fellowships CZ“)**
  - Operational Programme John Amos Comenius (OP JAC)
  - Proposals which obtained a high score in the MSCA call but were not funded under that call
  - Support for arrivals to the Czech Republic and departures from the Czech Republic
  - first OP JAC MSCA call in 2022, will be open also for proposals from MSCA-IF Horizon calls from previous years
- **ERA Fellowships („Widening Fellowships“)**
  - In order to promote fellowships in the countries with low participation = Widening Countries, e.g. Czech Republic
  - When submitting your proposal to the Postdoctoral Fellowships call, you can opt in for this type of grant, the evaluation is based on the evaluation of MSCA PF
  - The host institution must be located in one of the Widening Countries

# MSCA Staff Exchanges

# MSCA Staff Exchanges

- **Objectives**
  - MSCA Staff Exchanges promote innovative **international, intersectoral and interdisciplinary collaboration** in research and innovation through exchanging staff and **sharing knowledge and ideas** at all stages of the innovation chain.
  - The scheme fosters a shared culture of research and innovation that welcomes and rewards **creativity and entrepreneurship** and helps turn ideas into innovative products, services or processes.
  - **Open to any type of staff contributing to research activities** (actively engaged at the sending institution for at least one month before the secondment).




# MSCA Staff Exchanges

- Most international action under MSCA
- Emphasis on the added-value of the collaboration itself (joint R&I project)
- Continue supporting staff exchanges (secondments)
- International, intersectoral and interdisciplinary secondments of 1-12 months (possible splits), seconding and/or hosting eligible staff members (research, technical, administrative and managerial staff)
- 4 years for project implementation (no change)
- **Who applies?**
  - Consortium of at least three independent legal entities in three different countries, two of which in a MS/AC, organisations from academic and non-academic sector (incl. SMEs)
- **Novelties for applicants (consortia)**
  - Number of person-months reduced from 540 to 360 (to make projects more manageable)

New

# MSCA Staff Exchanges

## Mobility through secondments

- Three dimensions of mobility = inter-sectoral, international and interdisciplinary:
  - Inter-sectoral exchanges between MS/AC (between academia and non-academia)
  -  – Same-sector exchanges between MS/AC only if interdisciplinary and max. 1/3 of total person-months
  - Inter-sectoral exchanges not required with third countries
  - Exchanges between third countries or within the same MS/AC ineligible
- **Calls**
  - 2021: 7 Oct 2021 – 9 Mar 2022
  - 2022: 6 Oct 2022 – 8 Mar 2023

- EU contribution takes the form of unit contributions, depends on the number of person-months requested, 100% financing

Contributions for the recruited researcher per person-month		Institutional unit contributions per person-month	
Top-up allowance	Special needs allowance	Research, training and networking contributions	Management and indirect contributions
EUR 2 300	requested unit x (1/number of months)**	EUR 1 300	EUR 1 000

\*\* The pre-defined categories are as follows: EUR 3 000, EUR 4 500, EUR 6 000, EUR 9 500, EUR 13 000, EUR 18 500, EUR 27 500, EUR 35 500, EUR 47 500 and EUR 60 000.

# MSCA Co-funding of regional, national and international programmes

# MSCA Co-funding of regional, national and international programmes

- **Objectives**

- MSCA COFUND co-finances **new or existing doctoral programmes and postdoctoral fellowship schemes**,
- at regional, national or international level,
- with the aim to **spread the best practices of the MSCA**,
- including international, inter-sectoral and interdisciplinary research training (EU Principles for Innovative Doctoral Training),
- as well as transnational and cross-sectoral mobility of researchers at all stages of their career (**Career Development Plan** prepared at the beginning of recruitment and revised and updated when needed within 18 months),
- ensures **open, transparent and merit-based selection procedure** as set out in the Code of Conduct for the Recruitment of Researchers. The vacancy notice (to be widely advertised, including on the EURAXESS website) must include the minimum gross salary.

# MSCA Co-funding of regional, national and international programmes

- Funding to develop national, regional, international **doctoral and postdoctoral fellowship programmes** in **any discipline** (exceptionally focused on specific discipline) based on international mobility, interdisciplinary and inter-sectoral experience
- These programmes are accessible to **organisations in the EU/AC** wishing to implement these programmes (government ministry, regional authority, funding agency, university, research organisation, enterprise etc.) and collaboration with **associated partners** (incl. non-academia) is highly encouraged (hosting, secondment opportunities, training modules)
- Introduce **sustainable structuring effects** by promoting excellent and sustainable research training
- Spread best practices of the MSCA by promoting **high standards** in the recruitment process and **excellent working conditions**

# MSCA Co-funding of regional, national and international programmes

- Encourage **synergies** with Structural Funds
- **EU contribution**

New

- Simplification. The action will cover **minimum remuneration** to be used to support any cost items of the programme (living costs, mobility costs, family costs, research, training and networking costs, management and indirect costs)
- Limited to **EUR 10 million** per beneficiary per call (unchanged)
- **Duration**
  - Programmes: 60 months
  - Fellowships: min. 3 months
- **Calls**
  - 2021: 12 Oct 2021 – 10 Feb 2022
  - 2022: 11 Oct 2022 – 9 Feb 2023

- EU contribution takes the form of unit contributions, depends on the number of person-months requested

Contributions for recruited researchers and institutional contributions			
per person-month			
COFUND allowance		Long-term leave allowance	Special needs allowance
Doctoral programmes	EUR 2 800	EUR 2 800	requested unit
		x % covered by the beneficiary	x (1/number of months)**
Postdoctoral programmes	EUR 3 980	EUR 3 980	
		x % covered by the beneficiary	

\*\* The pre-defined categories are as follows: EUR 3 000, EUR 4 500, EUR 6 000, EUR 9 500, EUR 13 000, EUR 18 500, EUR 27 500, EUR 35 500, EUR 47 500 and EUR 60 000.



# MSCA and Citizens

# MSCA and Citizens

- **Objectives**
  - To bring **research and researchers closer to the public** at large
  - To **increase awareness** of research and innovation activities
  - To boost **public recognition of science** and research education
  - To show the **role of the researcher** in and for the society and economy and the impact of researchers' work on citizens' daily life
  - To raise the **interest of young people for research and scientific careers**
- MSCA and Citizens address the **general public**, with a **specific focus on families, pupils, students** (inclusiveness should be key)
- MSCA and Citizens should also promote **gender balance** and **inclusiveness in science, Open Science, and Responsible Research and Innovation**.

# MSCA and Citizens

- **Continuation of European Researchers' Night**, the largest research communication and promotion event taking place across EU/AC
- With a focus on EC priorities and European Research and Innovation Missions (Cancer, Climate, Oceans, Climate-neutral cities, Soil)
- And a promotion of the European Union and the impact of its policies on citizens' daily life
- **Call**
  - 2022: 17 Jun 2021 – 7 Oct 2021
- **EU contribution**
  - Lump sum (between EUR 50 000 and 150 000 per year)

**European Researchers' Night is to be held on 24 September in 2021**

# Support to MSCA applicants

- **National Information Days**
  - **Information Days on specific action**
  - **Applicants' workshops: intensive training in proposal writing**
  - Events on demand, specific trainings
  
  - Brochure on MSCA to be updated (Vademecum)
  - Individual consulting and proposal pre-screening (non-scientific issues), e-mails, phone calls, personal/virtual meetings
- **Collaboration with key stakeholders: Marie Curie fellows and evaluators ...**



# Planned events – INVITATION

Date	Venue	Event*
8 March 2021	on-line	Národní informační kampaň ZAPOJTE SE DO HORIZONTU EVROPA
23 March 2021	on-line	Infoday on MSCA under Horizon Europe – for the research community (by European Commission)
May 2021	on-line	Information day on MSCA Postdoctoral Fellowships
May 2021	tbc	Information day on MSCA Doctoral Networks
June 2021	tbc	Information day on MSCA COFUND
June 2021	tbc	Module 6: Applicants' workshop on MSCA Postdoctoral Fellowships
September 2021	tbc	Applicants' workshop on MSCA Staff Exchanges, 2. Networking setkání projektů MSCA RISE
October 2021	tbc	Applicants' workshop on MSCA COFUND

\* Title according to the language of the event

## Useful links

- **Marie Curie Actions Website** <http://ec.europa.eu/mariecurieactions>
- **Research Executive Agency** <http://ec.europa.eu/research/rea>
- **FTO Portal (applications, documents)** <http://ec.europa.eu/research/participants/portal>
- **CORDIS (funded projects)** [http://cordis.europa.eu/projects/home\\_en.html](http://cordis.europa.eu/projects/home_en.html)
- **Net4Mobility+ (MSCA NCP project)** <https://www.net4mobilityplus.eu/>
- **Euraxess Portal (vacancies, more information)** <https://euraxess.ec.europa.eu/>
- **European Charter for Researchers and Code of Conduct for the Recruitment of Researchers** <https://euraxess.ec.europa.eu/jobs/charter>



**Zuzana Čapková**

capkova@tc.cz

+420 702 179 875

Technology centre CAS

Ve Struhách 1076/27, Praha 6 – Podbaba

